



Innovative solutions in Surgical Lighting



ISO 9001, ISO 13485, ISO 14001, OHSAS 18001,
CE CERTIFIED AND US FDA REGISTERED

OSPEDIA MEDICARE PVT. LTD.

Professionals with over 42 years of experience in surgical lighting solutions...



About Us

Hospedia Medicare is a leading Indian manufacturer of shadowless LED operation theatre lights. With over 42 years of expertise in surgical lighting, Hospedia Medicare is providing high-quality, cost-effective, and reliable products to its customers in India and overseas.

With a single-minded focus on customer satisfaction, Hospedia Medicare is working diligently to create world-class surgical lighting solutions from its modern and sustainable manufacturing facilities.

To suit all your surgical lighting needs

We are the first Indian company to have a patent for our unique LED OT light design. Our design ensures natural light specific to user needs and is gentle to their eyes with proprietary intuitive features for ease.

With over 3000 installations worldwide, Hospedia Medicare is constantly growing to become a pioneer in the global surgical lighting industry.

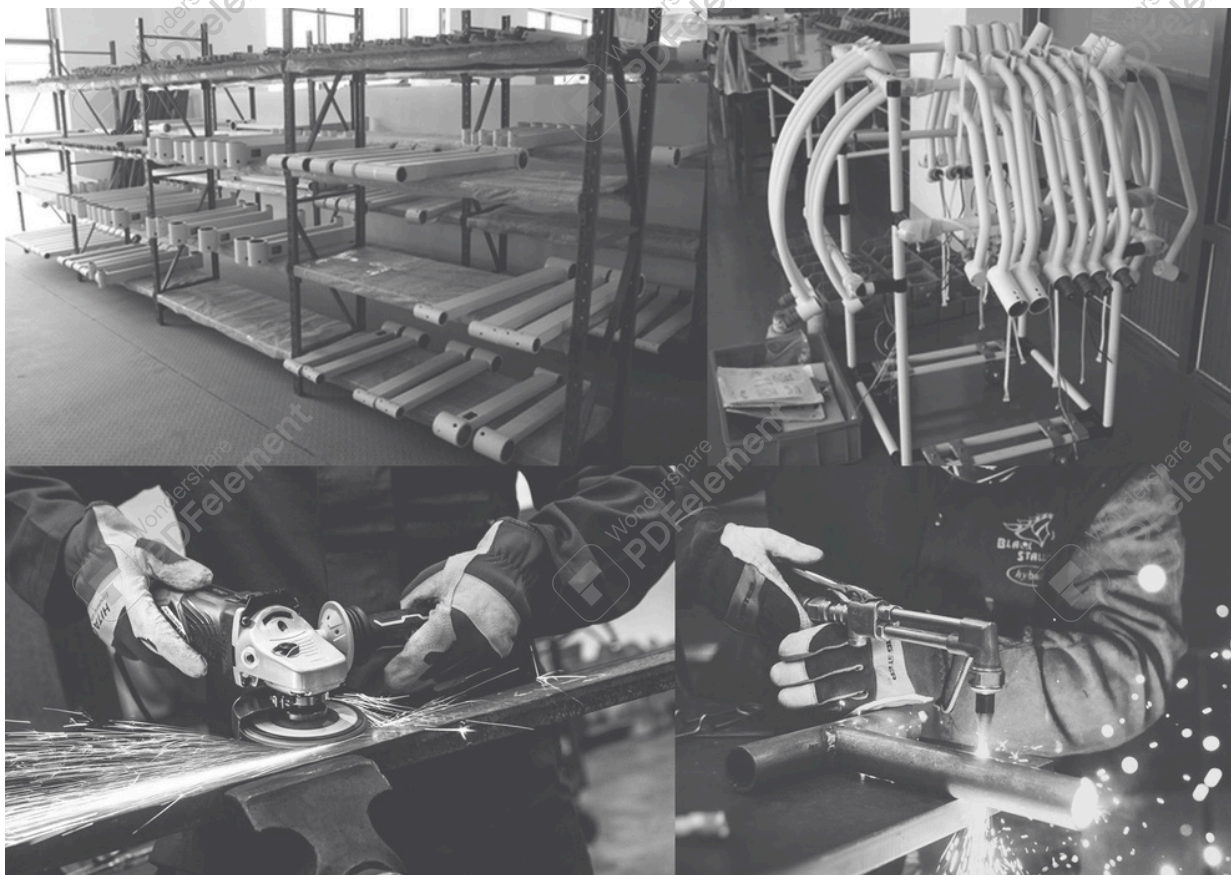


Modern and Sustainable Manufacturing Facilities

With a focus on customer satisfaction, we are working diligently to create world-class surgical lighting solutions from our modern and sustainable manufacturing facilities. Our manufacturing facilities boost an in-house R&D, manufacturing, assembling, and service-repair center.

We have a wide range of networks to provide quick and prompt support. Our service support for OT light installation and maintenance has a system of reliable engineers to guarantee consistent and on-time support.

The manufacturing, research, and quality assurance teams at Hospedia work to enhance the user experience through various variants, including wall-mounted, mobile, and ceiling OT light versions of single dome, double dome, and triple dome LED OT lights.





Our Infrastructure

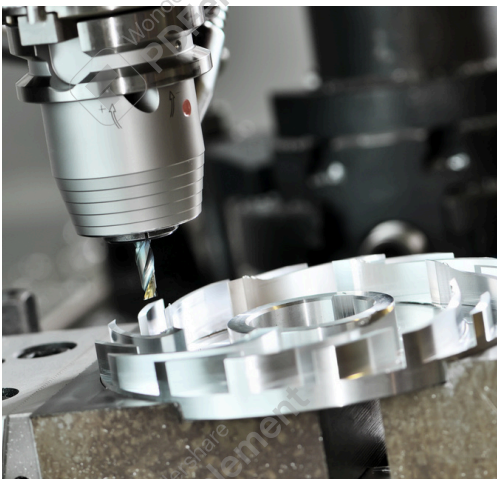
Headquartered in the heart of Haryana in Gurgaon, India, the manufacturing facility has access to the best suppliers, vendors, and an ecosystem to support product OT light manufacturing, assembly, and innovation. Our focus on sustainable performance ensures that our products are economical and environmentally friendly, with a long life to reduce wastage.

We use clean technology that does not contain halogens, CFCs, or mercury content. Our superior product design also reduces power consumption by nearly 70% while maintaining the optimum light intensity.

Our product portfolio is the result of extensive research and experience. We provide world-class technology for an enriching experience with our products through in-house manufacturing, assembly, and quality testing. Our experienced research team's extensive research has resulted in world-class products at our in-house research center.

Our manufacturing facility is equipped with world-class necessities and the latest machinery for product innovation and manufacturing. It enables us to incorporate the best surgical lighting technologies.

Our Infrastructure

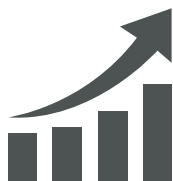
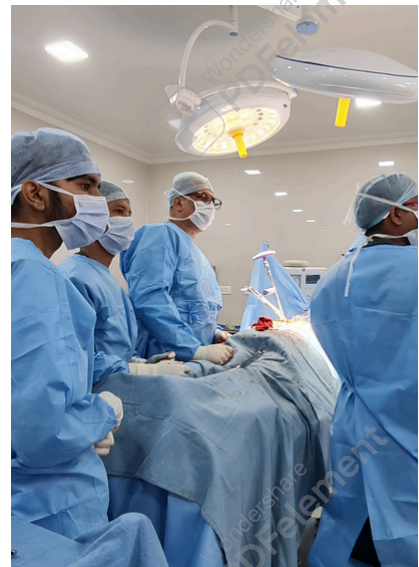


An ISO 9001:2015-certified organization

Customer satisfaction

Customer satisfaction is our top priority and has kept us going for many years. We are moving forward to be an eminent leader in the healthcare industry. With more than 3000 installations, repeat customers, and positive word of mouth, we are succeeding in our endeavours to keep "customer" at the heart of our operations, manufacturing, and services.

Our purpose is to provide our customers with the best ceiling, mobile, and camera-fixed operating lights. We focus on maintaining a long-term, mutually beneficial relationship with our customers and stakeholders through our focus on quality products and services.



OVER 3000+ SUCCESSFUL INSTALLATIONS...



I'm so glad to put it on record that the OT light supplied and installed by your company in the operation theatre of my hospital is indeed a world-class product, comparable to the best OT lights from any national or international company available in our country. Your commitment to post-sales service is indeed laudable.

I highly recommend your product to all my friends and colleagues.

My best wishes for all your ventures.

DR SHANTANU KUMAR ANAND, ORTHOPAEDIC SURGEON
Past Secretary, Indian Foot and Ankle Society
Secretary, Asia Pacific Foot and Ankle Council
(APOA F&A Council)

Quality Assurance

Our quality control team for LED OT lights ensures that every component undergoes stringent quality checks. Every component is tested for its fitness for purpose in order to provide our customers with high-quality products. In-house testing instruments to authenticate the specifications of our products enable us to deliver up to our customers' expectations.

Our quality assurance and quality control team works with a policy to accept responsibility for the complete satisfaction of our customers. Thus, training of employees, adherence to established procedures, commitment to meeting or exceeding customer requirements, and maintaining a company culture that fosters continuous improvement are focused upon.





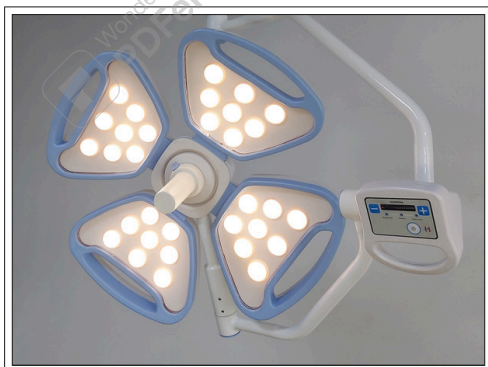
PRODUCT LINE SHEET



HOSPEDIA LED 50 SERIES

Product code: HOSPEDIA LED 50

Hospedia LED 50 is a classic edition with advanced features and variants as per the needs of different surgeries. It is the patented design and flagship product of Hospedia. It has three distinct modes of surgery, provides excellent lighting depth, and eliminates distracting shadows from surgeons' heads and hands.



HOSPEDIA PRECISION 300 SERIES

Product code: PRECISION 300

Hospedia Precision 300 Series is a screwless design of OT light designed in compliance with DIN 1964-4:2008-12. The design is easy to clean, with quality and durability being the key aspects of all Hospedia products.



HOSPEDIA EXAMINATION LIGHT SERIES

Product code: ELITE 19

Hospedia Examination Light Series is an all-new, cutting-edge LED examination light series with excellent illuminance up to 80,000 lux to meet medical examination requirements.

LED 50 SERIES

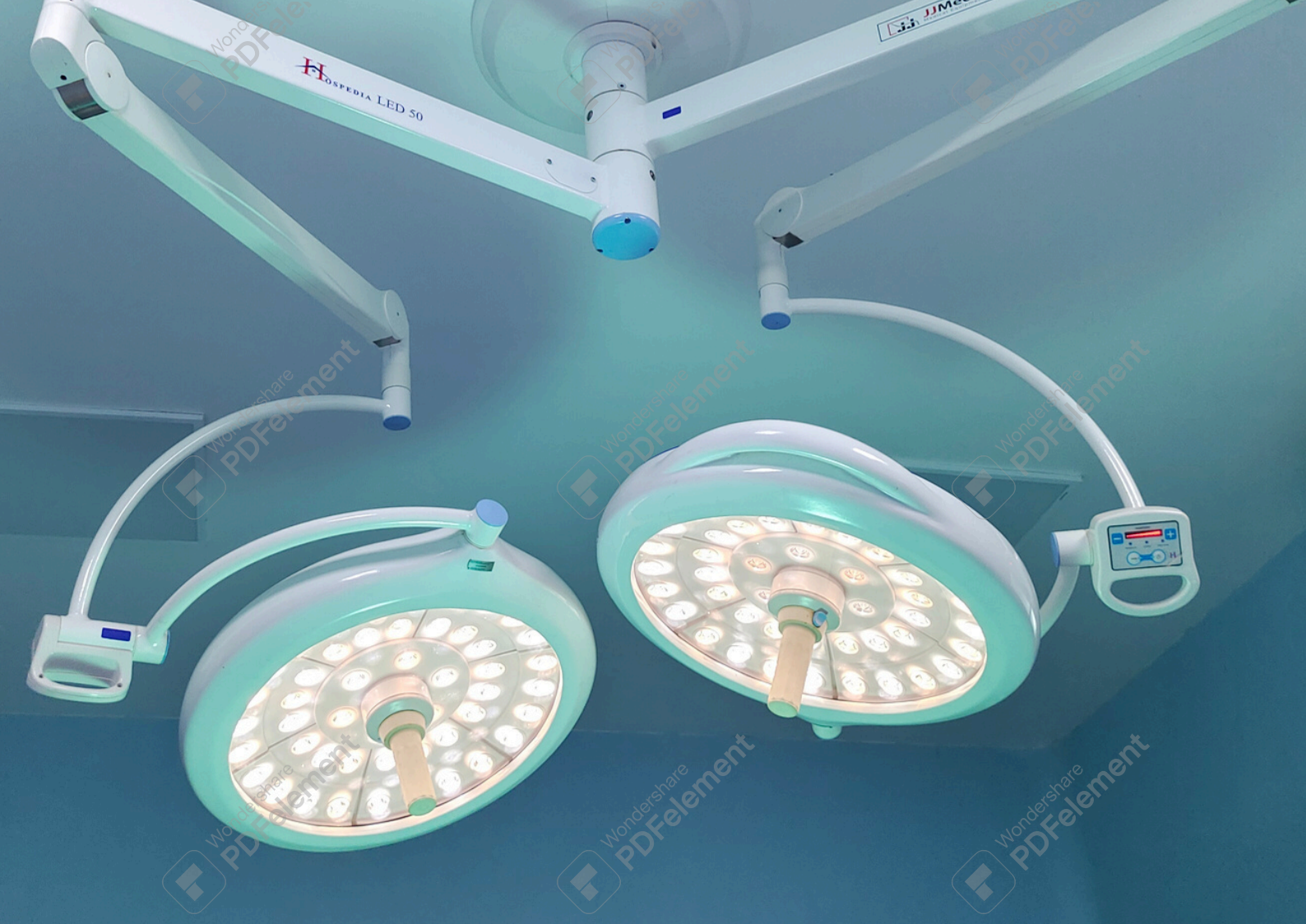




HOSPEDIA LED 50 SHADOWLESS OT LIGHT

ISO 9001, ISO 13485, ISO 14001, OHSAS 18001,
CE CERTIFIED AND US FDA REGISTERED

 **HOSPEDIA MEDICARE PVT. LTD.**
Professionals with over 42 years of experience in surgical lighting solutions...



Patented Design

LED Operation Theatre Lights by Hospedia Medicare use the latest innovation in LED technology through stringent quality checks for our products to provide enduring and long-lasting performance at lower lifetime costs.

For all your clinical needs, we offer surgical lights with varying intensities, colour ranges, and mounting structures. Hospedia's shadowless LED operation theatre light dome is designed with a superior aerodynamic design with less heat generation that facilitates suitable laminar flow properties as per DIN 1946-4 and SWKI Class 5 (German Institute of Standardization).

This optimises laminar air flow in all demanding conditions for an extremely comfortable temperature on the health practitioner's head, even during long medical procedures.



SHADOWLESS SURGICAL LIGHT



Our patented proprietary dome design gives a controllable focus of homogenous light through a lens system that maintains the natural colours of tissues without straining the eyes of practitioners and other users. Manual and wireless control options allow the practitioners to adjust the focus pattern and colour as per the need of the surgery.

Hospedia Medicare LED surgical lights proprietary design and configuration make them slim, smooth, and compact for a precise focus during procedures. Our LED surgical lights have an impressive 160,000 lux output for a powerful performance during procedures.

With the high-intensity vision light, uniform vision can be maintained across the entire illuminated area.

Our specially designed medical lenses create a shadow less impact while maintaining the depth of the field for the healthcare practitioner.

Hospedia Medicare proprietary design and configuration of light enables excellent shadow controls to under light obstructions during surgical procedures to eliminate head and hands shadows.



Seamless Movement

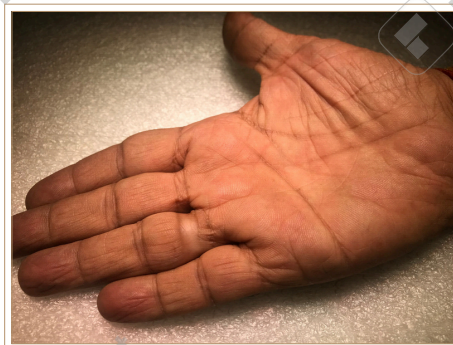
Hospedia Medicare LED surgical lights can have seamless movement from any angle to cover a wide spectrum of movement. Our LED surgical lights are armed with German springs and ensure a complete 360-degree rotation from the central axis and revolving axis.

Quality and durability in our design are the key features, and we use the finest quality of springs to ensure there will be no instance of the surgical light moving or coming down on its own during surgeries.

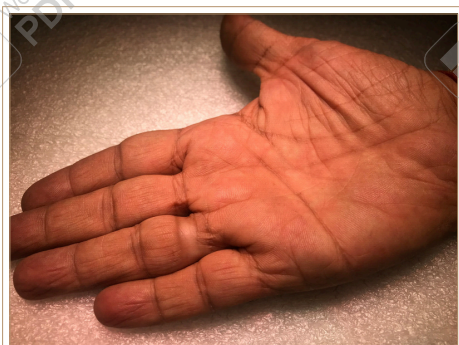
Different colour temperatures for different surgeries



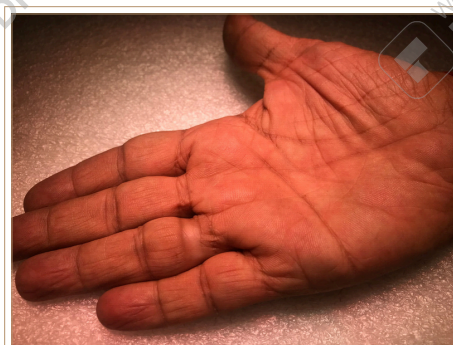
5000K



4500K



4000K



3800K



**PLUG AND PLAY SONY HD CAM COMPATIBLE
WITH HOSPEDIA LED 50 SHADOWLESS OT LIGHT**



LED 50 SERIES

| MODEL | LED 50 SINGLE DOME | LED 50 DOUBLE DOME | LED 50 TRIPLE DOME |
|----------------------------|------------------------|--------------------|----------------------|
| Type | Ceiling/Mobile Mounted | Ceiling | Ceiling |
| No of Domes | 1 | 2 | 3 |
| No of LEDs | 48 | 48 +48 | 48 +48+48 |
| Light Head Diameter (mm) | 500 | 500 | 500 |
| Max. Light Intensity at 1m | 160000 | 160000+160000 | 160000+160000+160000 |
| LED's Life | 50000 hours | 50000 hours | 50000 hours |
| Ambient light intensity | 300lx | 300lx | 300lx |
| Color Temp. | 3800 - 5000 K | 3800 - 5000 K | 3800 - 5000 K |
| Color Rendition Index(Ra) | 95 | 95 | 95 |
| Color Rendition Index(R9) | 95 | 95 | 95 |
| Spot Diameter | 130- 300 mm | 130- 300 mm | 130- 300 mm |
| Temp at Surgeon's Head | < 1 Degree | < 1 Degree | < 1 Degree |
| Lighting Depth (L1+L2) mm | 750- 1300 | 750- 1300 | 750- 1300 |
| Supply Voltage | 220-240 V | 220-240 V | 220-240 V |
| Weight | 25 Kgs | 50 Kgs | 75 Kgs |
| Sterilizable Handle | available | available | available |
| Remote Control | available | available | available |

Variants

| Code | Model No |
|-----------------------------|--|
| LED 50 SC | SINGLE DOME (CEILING TYPE) SHADOWLESS LED OT LIGHT |
| LED 50 M | SINGLE DOME (MOBILE TYPE) SHADOWLESS LED OT LIGHT |
| LED 50 DC | DOUBLE DOME (CEILING TYPE) SHADOWLESS LED OT LIGHT |
| LED 50 TC | TRIPLE DOME (CEILING TYPE) SHADOWLESS LED OT LIGHT |
| LED 50 DC + CAM | DOUBLE DOME (CEILING TYPE) SHADOWLESS LED + INBUILT CAMERA SYSTEM |
| LED 50 DC + CAM+ MONITOR | DOUBLE DOME (CEILING TYPE) SHADOWLESS LED + INBUILT CAMERA SYSTEM + MONITOR ON THE THIRD ARM |
| LED 50 TC + CAM | TRIPLE DOME (CEILING TYPE) SHADOWLESS LED OT LIGHT + INBUILT CAMERA SYSTEM |
| LED 50 TC + CAM+ MONITOR | TRIPLE DOME (CEILING TYPE) SHADOWLESS LED OT LIGHT + INBUILT CAMERA SYSTEM + MONITOR |



OPTIONAL ACCESSORIES



RED TONING COLOUR ENHANCEMENT

LED 50 Red Toning OT Light is a proprietary design with a red toning feature to enhance tissue clarity during specific surgeries involving tissues, such as cardiac and neurosurgeries. proprietary slim and compact design has individual OSRAM modules for enhanced output and shadow control.



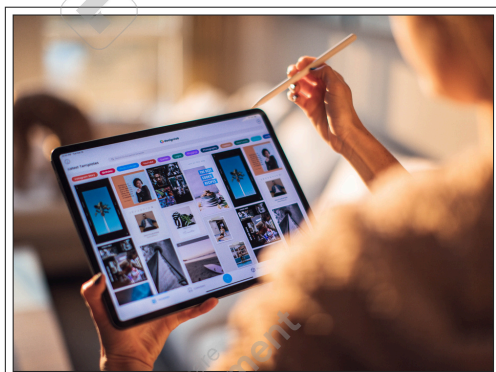
CAMERA PROVISION

The system can carry out video transmission, recording, and broadcasting of the procedure, and it can also be used in teaching, discussions, and consultations for the benefit of health practitioners.



THIRD ARM FOR MONITOR ATTACHMENT

Hospedia Medicare surgical lights can be customized with a Third Arm for Monitor attachment. This eases the operation and movement of LED OT lights and monitors across the OT for greater team collaboration and flexibility in movement.



WIRELESS TABLET

Hospedia Medicare surgical lights can be accessorised with wireless tablets to provide additional control and operate all the functions of the light wirelessly.

OPTIONAL ACCESSORIES



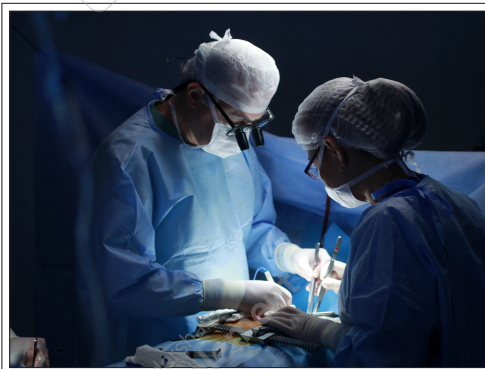
TOUCHSCREEN CONTROL PANEL

Hospedia Medicare surgical lights have a touchscreen control panel for easy operation and usage. It provides easy access to illumination control, different modes, camera settings, and many more functions.



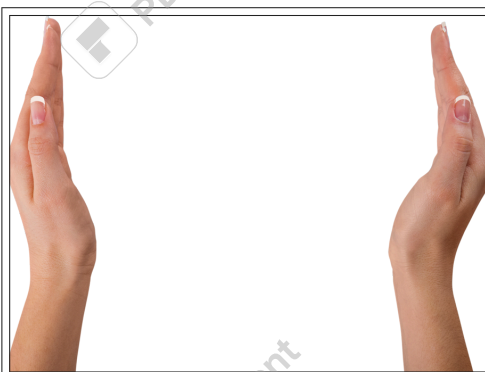
MOTORIZED FOCUS ADJUSTMENT

Motorized focus adjustment in surgical OT lights can increase or decrease the width of focus to support the lighting needs of health practitioners without the need to rotate the sterilizable handle manually to adjust the focus pattern.



AUTOMATIC SHADOW MANAGEMENT

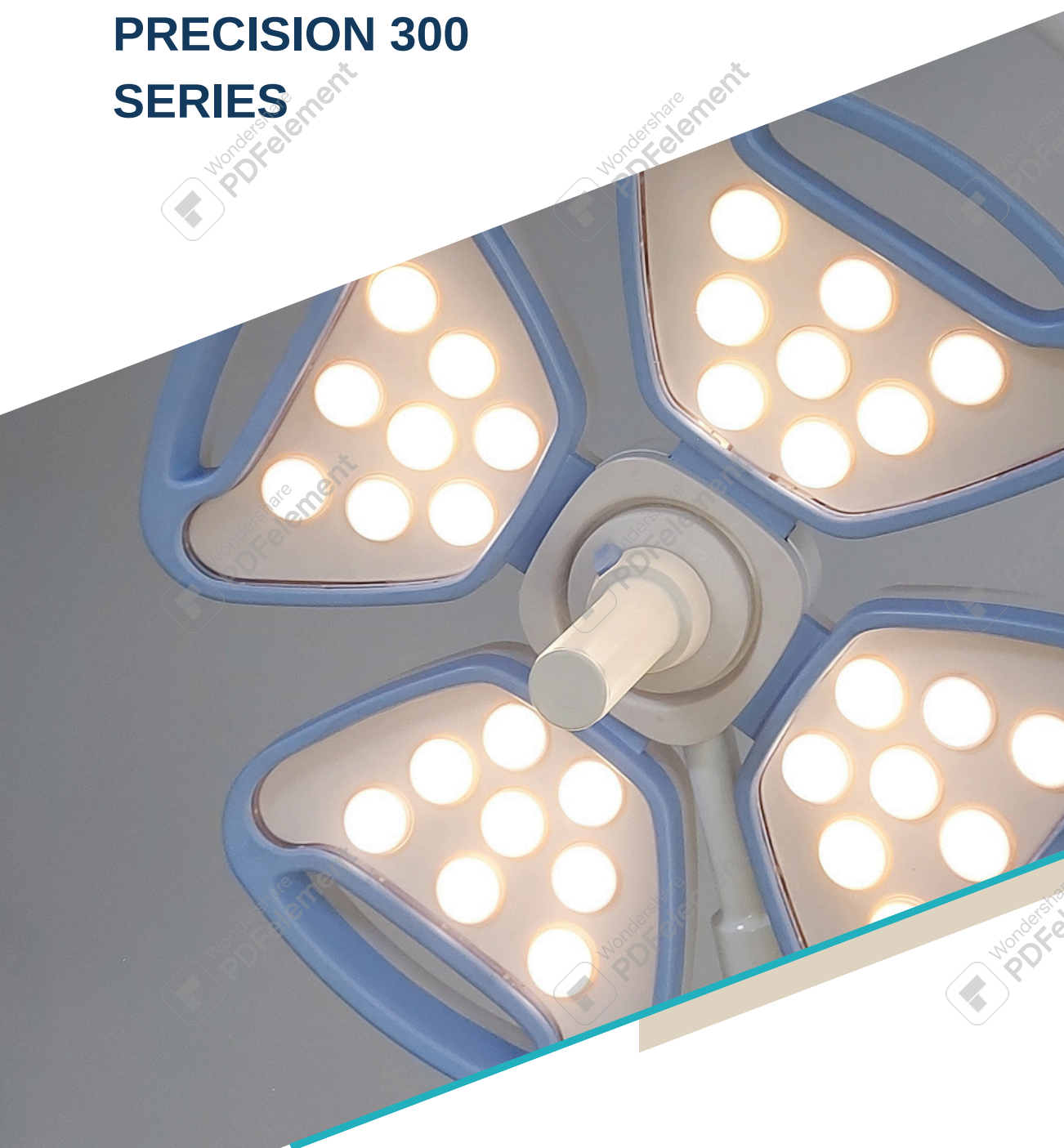
When the surgeon's head comes into contact with the light, the Hospedia LED 50 can be equipped with auto-detection motion sensors to provide adequate illumination.



GESTURE CONTROL ILLUMINATION ADJUSTMENT

Gesture control illumination adjustment in surgical OT lights is an advanced feature for illumination control from 10,000 to 160,000 Lux without actually touching the keypad controller manually.

PRECISION 300 SERIES





SCREWLESS DESIGN

Screwless design that complies with DIN 1964-4:2008-12. easy to clean, Quality and durability in our design are the key features to ensure that there will be no instance of a surgical light moving or coming down on its own during surgeries.

Hospedia Medicare's LED surgical light can have seamless movement from any angle to cover a wide spectrum of movement.

Our indigenously designed structures ensure a complete 360-degree rotation from the central axis and revolving axis.





INFECTION CONTROL

The smooth surface of Hospedia LED OT lights' heads allows for easy disinfection and maintenance of a sterile environment in the operation theater. Precision LED surgical lights also have a removable handle that can be sterilized for disinfection and to protect from the ingress of fluids.

LONG LASTING LED'S

Our LED surgical light has a life of >50,000 hours, which equates to more than 10 years of continuous usage. Hospedia LED Surgical Lights are also highly economical and environmentally sustainable, as they have 70% less energy consumption as compared to most of the other brands.



PRECISION 300 SERIES

| MODEL | PRECISION 300 SINGLE DOME | PRECISION 300 DOUBLE DOME | PRECISION 300 TRIPLE DOME |
|----------------------------|---------------------------|---------------------------|---------------------------|
| Type | Ceiling/Mobile Mounted | Ceiling | Ceiling |
| No of Domes | 1 | 2 | 3 |
| No of LEDs | 32 | 32 +32 | 32+32+32 |
| Light Head Diameter (mm) | 520 | 520 | 520 |
| Max. Light Intensity at 1m | 160000 | 160000+160000 | 160000+160000+160000 |
| LED's Life | 50000 hours | 50000 hours | 50000 hours |
| Ambient light intensity | 300lx | 300lx | 300lx |
| Color Temp. | 3800 - 5000 K | 3800 - 5000 K | 3800 - 5000 K |
| Color Rendition Index(Ra) | 95 | 95 | 95 |
| Color Rendition Index(R9) | 95 | 95 | 95 |
| Spot Diameter(mm) | 130- 300 mm | 130- 300 mm | 130- 300 mm |
| Temp at Surgeon's Head | < 1 Degree | < 1 Degree | < 1 Degree |
| Lighting Depth (L1+L2) mm | 750- 1200 | 750- 1200 | 750- 1200 |
| Supply Voltage | 220-240 V | 220-240 V | 220-240 V |
| Weight | 20 Kgs | 40 Kgs | 60 Kgs |
| Sterilizable Handle | available | available | available |
| Remote Control | available | available | available |
| Camera | Optional | Optional | Optional |





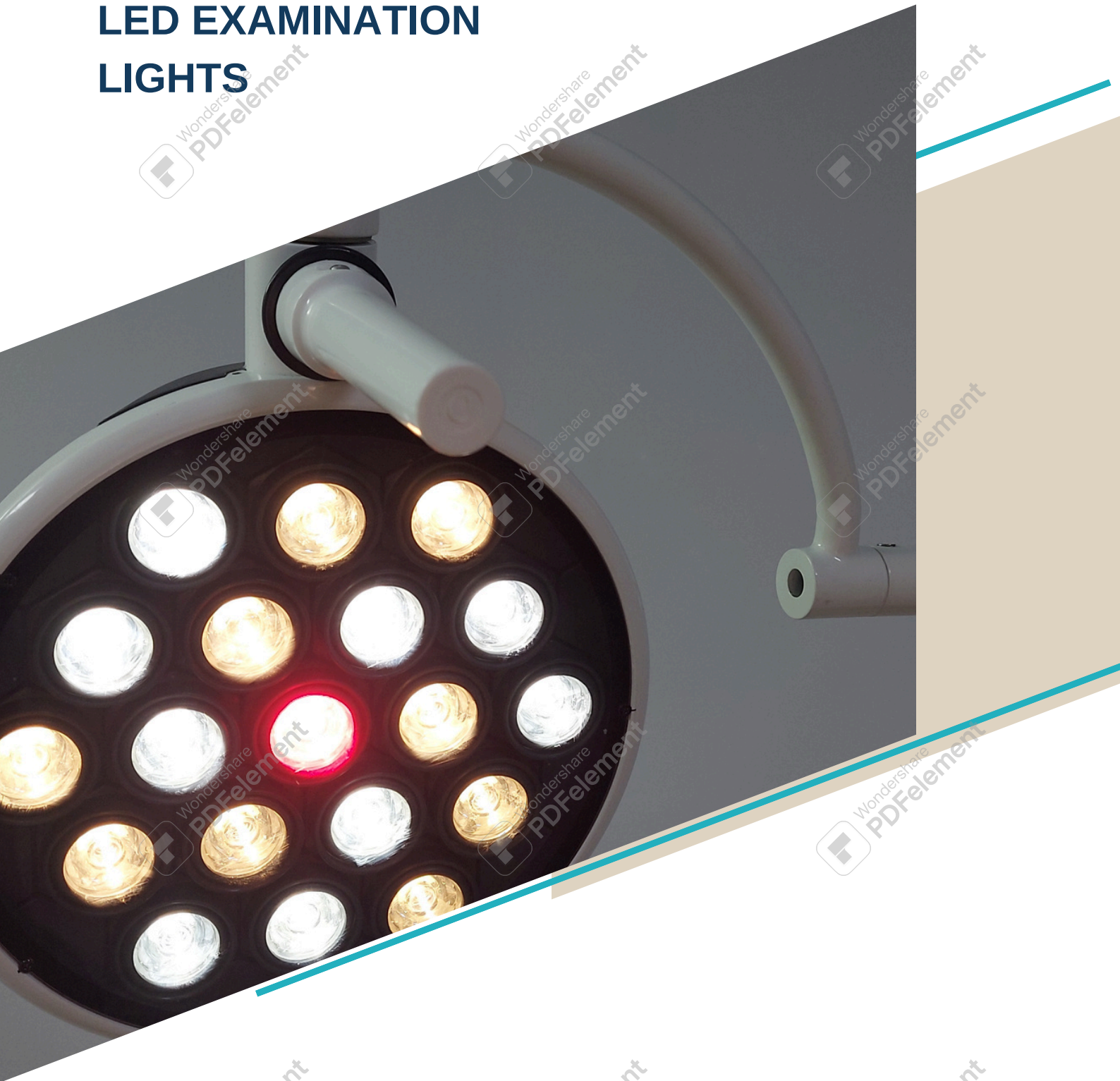
**ZERO TEMPERATURE RISE AND AN
EXCELLENT DEPTH OF ILLUMINATION**



VARIANTS

| Code | Model No |
|------------------------|---|
| PRECISION 300 SC | SINGLE DOME (CEILING TYPE) SHADOWLESS LED OT LIGHT |
| PRECISION 300 M | SINGLE DOME (MOBILE TYPE) SHADOWLESS LED OT LIGHT |
| PRECISION 300 DC | DOUBLE DOME (CEILING TYPE) SHADOWLESS LED OT LIGHT |
| PRECISION 300 TC | TRIPLE DOME (CEILING TYPE) SHADOWLESS LED OT LIGHT |
| PRECISION 300 DC + CAM | DOUBLE DOME (CEILING TYPE) SHADOWLESS LED OT LIGHT + CAMERA SYSTEM ON THE THIRD ARM |

LED EXAMINATION LIGHTS



HOSPEDIA ELITE 19

The all-new Hospedia LED Elite 19 examination light comes with an excellent illuminance of 80,000 lux and promises to deliver the highest lighting performance and colour-corrected light with R9 colour adjustment.

A large, illuminated operating area makes it extremely easy for the practitioners to analyse the large areas of tissue and makes it easier for them to target the examination light on the patient. The high Ra and R9 values help in accurately reproducing the red colour and improving the tissue visualization.

With different colour settings, lux settings, and R9 settings, practitioners can easily adjust its performance based on the application.



Concealed Design

Aluminum Non Breakable Dome



VARIABLE CT RED TONING

APPLICATION: GENERAL MEDICINE, DENTAL, EMERGENCY,
GYNECOLOGY, TRAUMATOLOGY ETC

VARIANTS



ELIE 19 MOBILE



ELITE 19 CEILING



LED 8000 MOBILE



SPECIFICATIONS



| MODEL | HOSPEDIA ELITE 19 | HOSPEDIA LED 8000 |
|---------------------------|----------------------|-------------------|
| ILLUMINATION AT 1M(LUX) | >80000 | >12000 |
| COLOR TEMP(K) | 3500-6500(variable) | 4500k |
| DEPTH OF ILLUMINATION(MM) | 500-1000 | 500-750 |
| COLOR RENDERING INDEX(Ra) | 95 | 95 |
| NO OF LEDS | 19 | 1 |
| DIAMETER OF THE DOME(MM) | 280 | 75 |
| OVERALL HEIGHT (INCHES) | 96 | 89 |

VARIANTS

| Code | Model No |
|------------|--|
| ELITE 19M | ELITE 19, MOBILE VERSION |
| ELITE 19C | ELITE 19, CEILING VERSION |
| ELITE 19W | ELITE 19, WALL MOUNTED VERSION |
| ELITE 19CD | ELITE 19, CEILING VERSION (DOUBLE DOME) |
| LED 8000M | LED 8000, MOBILE VERSION |
| LED 8000W | LED 8000, WALL MOUNTED VERSION |



INTERNATIONAL EXHIBITIONS







Professionals with over 42 years of experience in surgical lighting solutions...



For inquiries, please call +91 9873772064 or email us at sales@hospediamedicare.com.

Contact Information

India

Gurgaon

F 2634, Palaam Vihar, Gurgaon

Haryana – 122017

Email: sales@hospediamedicare.com

Phone: +91 9873772064

Australia

Sydney

48/95, Bonar Street

Wolli Creek 2205, New South Wales

Email: care@hospediamedicare.com

Phone: +61 426052839

Canada

Montreal

650, Avenue Danvers,

Montreal, Canada

Email: care@hospediamedicare.com

Phone: +1 (514) 649-0678

Follow us on social media,

Facebook : www.facebook.com/hospediamedicare

Linkedin : <https://www.linkedin.com/company/hospedia-medicare/>

Twitter : <http://twitter.com/HospediaM>, Skype: hospedia.medicare

